



eran industrial.

THE **TWAIN**.

LED WALLPACK/FLOOD LIGHT



FWL SERIES

1 LIGHT - 3 MOUNTS



THE **TWAIN.**
LED WALLPACK/FLOOD LIGHT

	15W	FWL 100
	28W	FWL 200
	50W	FWL 300
	80W	FWL 400

**WE CONTINUE TO
BRING ADVANCED
LED TECHNOLOGY
TO THE LIGHTING
INDUSTRY.**



THE **TWAIN.**

PRODUCT OVERVIEW

UL wet listed die-cast aluminum construction with PC lens, complete with stainless steel hardware. Mounts to standard 4 inch square electrical junction boxes. Alternate junction box mounting possible via universal mounting ring. Ingress resistant gasket included.



**1 LIGHT
3 MOUNTS**



1



3

Adjustable Wall Mount. Trunnion Bracket.

- Premium brand LEDs (Phillips® chips depending on SKU) and YG® driver technology
- Precision die-cast Aluminum • IP65 rated fixture for outdoor use
- Chip and fade resistant powder coat finish in any color
- Precision prismatic refractor
- Industrial grade, Button-type photocell.
- All the mountings options - Wall mount, knuckle, and trunnion are quickly field-installable allowing the Twain to be seamlessly a wallpack and floodlight.

THE **TWAIN.**

PRODUCT OVERVIEW



HANDS-FREE INSTALL

Knock-out holes to fit any junction box with integrated bubble-level for level mounting

STRONG HOUSING

Die cast aluminum with weather resistant powder coating paint

SWIVEL KNUCKLE FLOOD MOUNT

Mount to junction box cover with 1/2" hole or landscape post (both sold separately)

ADJUSTABLE ANGLE WALL/EAVE MOUNT

Select 0-180° vertical angle to shine light where needed

MAINTENANCE-FREE

Premium LEDs lasting over 50,000 hours

THE **TWAIN.**

PRODUCT SPECIFICATIONS



FWL 100
15W



FWL 200
28W



FWL 300
50W



FWL 400
80W

SPECIFICATION & VARIATIONS

Sample

FWL100-15W-40K-V8-NA-BZ-WM

BODY TYPE	SYSTEM WATTAGE	CCT	VOLTAGE	ELECTRICAL (PHOTOCELL)	HOUSING FINISH	MOUNTING
FWL100 -	15W -	40K -	V8 -	PC -	BZ -	WM -
FWL100	15W	40K = 4000K	V1 = 120V	PC = Photocell	BZ = Bronze	WM = Wall Mount
FWL200	28W	50K = 5000K	V8 = 120-277V	NA = None	WH = White	KN = Knuckle
FWL300	50W				BK = Black	TR = Trunnion
FWL400	80W				SL = Silver	
					GY = Gray	

BUILD YOUR ORDER SKU NUMBER - If you don't see a specific feature listed above, please contact your regional sales representative for details about custom made to order (MTO) luminaires.

PRODUCT SUMMARY



LED Chip:	Phillips® LED chips and DS driver technology
CRI:	≥70
Warranty:	Warranty: 5 Years (terms and conditions apply).
Ambient Operating Range:	-30°C to 40°C
Rated Life:	More than 100K hours per L70 TM-21 @ 70 °C
Dimensions:	FWL100: 5.83"x5.51"x1.69", FWL200: 7.80"x6.46"x2.01", FWL300: 9.69"x8.07"x2.40", FWL400: 12.09"x9.06"x2.56"
Weight:	FWL100: 1.10 lbs, FWL200: 1.65 lbs, FWL300: 2.65 lbs, FWL400: 4.41 lbs
Electrical:	120-277V operation, 50/60Hz, Single Driver RoHS and IP65
Application:	Ideal for Commercial, Residential spaces



THE **TWAIN.**

PRODUCT SPECIFICATIONS



FWL 100
15W



FWL 200
28W



FWL 300
50W



FWL 400
80W

THE TWAIN FWL100-400

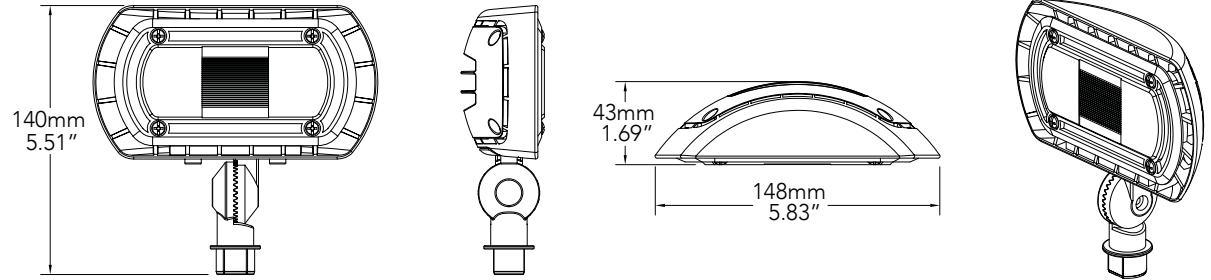
CCT	SYSTEM WATTAGE	LED WATTAGE	LUMENS (LMS)	LUMENS PER WATT	REPLACES (MH)	CRI	OPTICS INFORMATION	VOLTAGE	WEIGHT
40K	15W	14W	1500	100	70W	≥80	Forward Throw	120-277	1.10 lbs.
	28W	26W	2800		100W				1.65 lbs.
	50W	45W	5000		175W				2.65 lbs.
	80W	70W	8000		250W				4.41 lbs.
50K	15W	14W	1500	100	70W	≥80	Forward Throw	120-277	1.10 lbs.
	28W	26W	2800		100W				1.65 lbs.
	50W	45W	5000		175W				2.65 lbs.
	80W	70W	8000		250W				4.41 lbs.

THE **TWAIN.**

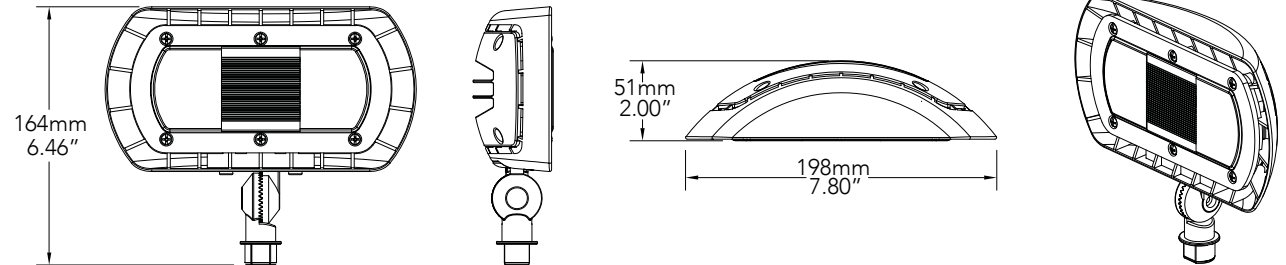
PRODUCT LINE DRAWING



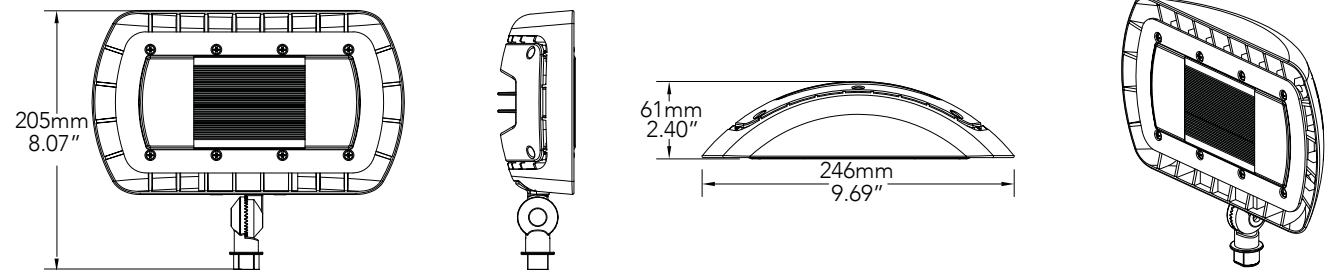
FWL 100
15W



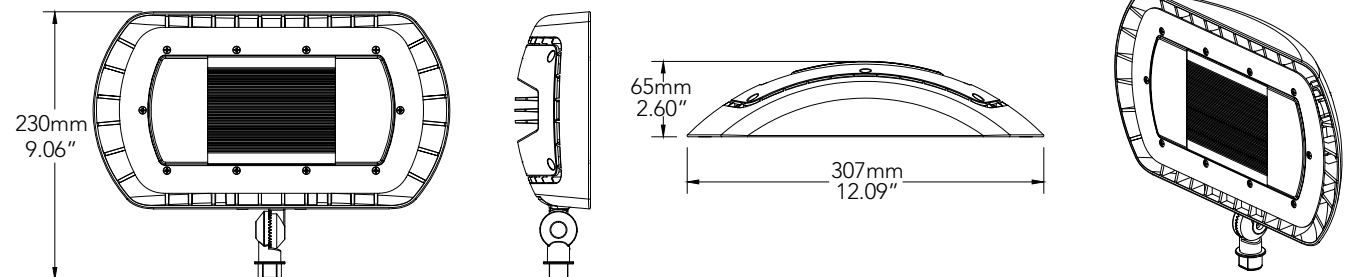
FWL 200
28W



FWL 300
50W



FWL 400
80W





Ready to Order or have any questions?

Contact us for any additional information, such as IES documentation and lighting specification Sheets, or please visit us online at: www.eranindustrial.com



Office

1.844.411.LITE



Sales

sales@eranindustrial.com

Office Location.



USA Office

3500 NW 2nd Avenue,
Ste 717 Boca Raton,
Florida 33431



CHINA Headquarters

17/F Guangbo Mansion
#1357 Yinxian Avenue
Yinzhou District
Ningbo, China 315100



eran industrial.